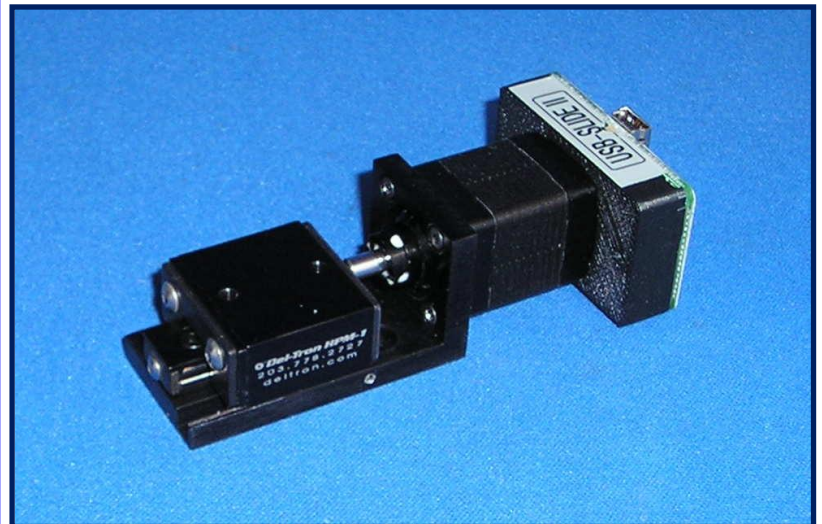


USB-Slide II

System Features

- Small precision stepper motor controlled linear slide **(\$535 each, single piece)**
- Draws power from a standard USB port , no external power supply required
- Fully self-contained, with onboard control and driver electronics
- Small system size of 4.3 cm X 9.2 cm (1.7" X 3.6")
- Move loads of over 1.0 Kg (~2.2 pounds)
- Linear range motion of about 9mm (~0.35")
- Positional resolution of 1.5 microns (0.00006")
- Power efficient, holds position with no power
- Built-in magnetic (Hall effect) home sensor
- PC Windows based user interface included for easy "out of the box" motion control
- LabView and C examples with a DLL file included for custom automated application



The USB-Slide II is a motorized precision linear slide for automated applications. Powered and controlled solely by a standard USB port, this system provides the method of automated control unmatched in size, simplicity, and ease of use.

The USB-Slide application software runs on any standard PC with Windows-XP/Vista with a standard USB port. This user interface provides for velocity (step speed), and position (step) control. All position movements are relative to the home (fully retracted) position. A built-in magnetic (Hall) sensor is used to establish this home position. Each USB-Slide has a unique serial number to allow multiple devices to be controlled with the use of an externally powered USB Hub.

Picard Industries

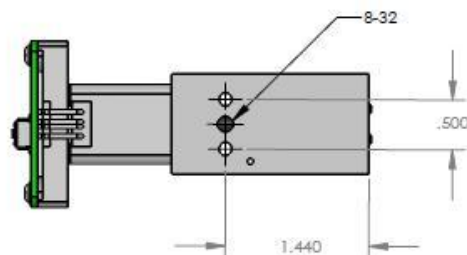
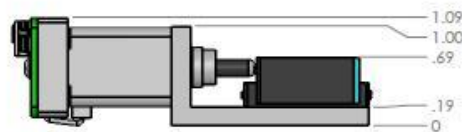
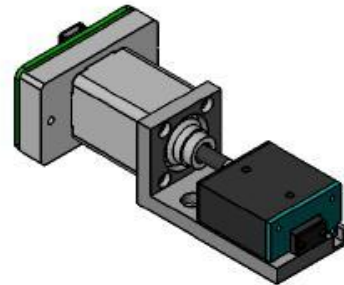
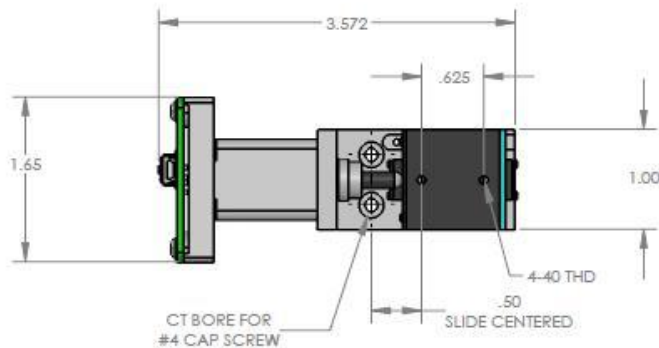
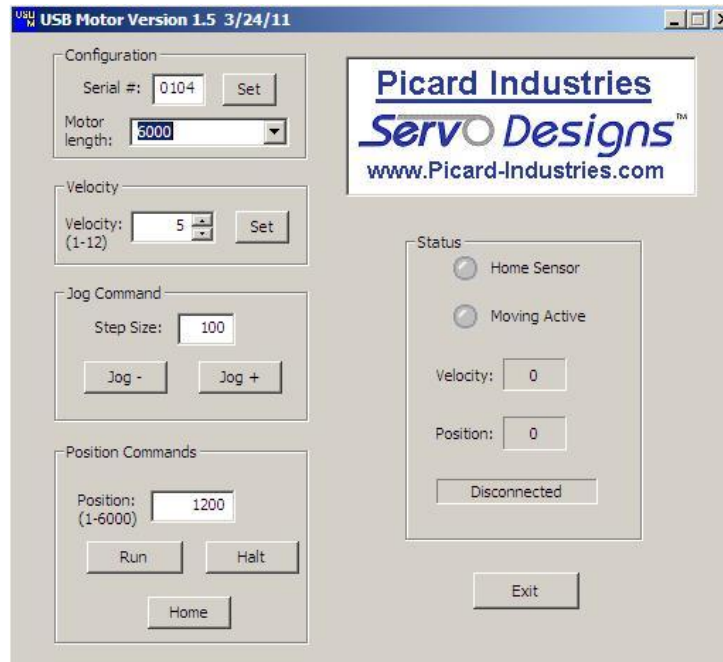
4960 Quaker Hill Road, Albion, New York 14411

(585) 589-0358

www.Picard-Industries.com

USB Motor/Slide User Interface

Below is a screen shot of the control software that is provided with the USB-Motor/Slide system. This software comes on a CD and will automatically begin the setup process upon insertion into any standard PC with a Windows-XP/VISTA operating system. After the software has been successfully loaded, simply attach the USB-Slide II to a USB port with the provided cable. Enter the unit's serial number and click the Set configuration button. The software will auto-detect the connection in the Status box and allow you to begin controlling the position of the motor/slide.



Picard Industries
USB-Slide II